

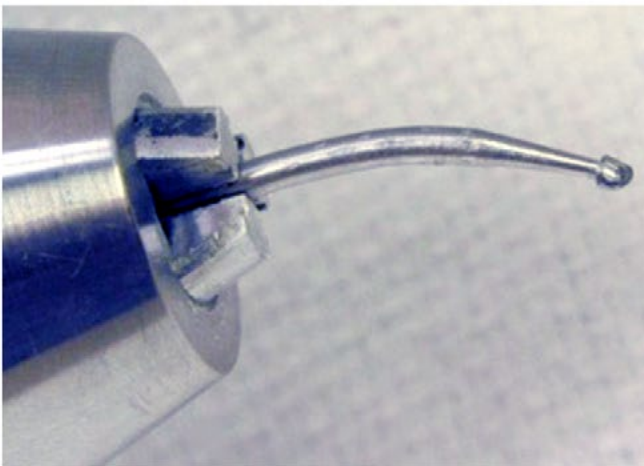


## Preat Denture Stippling Mandrel

The long lasting steel Stippler has a 1/4 inch shaft to fit most standard lathe chucks. The Stippler accepts three straight hand piece burs of your choice--either #2, #4, or #6. The clustered, three-bur pattern develops a realistic patina on denture resin. The Stippler is comfortable to use, as the vibration transmitted to your hand is reduced due to the balance of burs. Stippling is done so that food particles have less chance of adhering to the denture base and to create a more natural appearance.

The result is an effect that very closely mimics the natural stippled surface of tissue. Shorten the carbide burs before mounting them in the Stippler, bend them slightly, and either dull the cutting flute or use well-worn burs in this device. It is up to you as to your desired effect--the Stippler makes quick work of a tedious job!

**Which would you rather use?**



*The single bent #8 bur is a thing of the past!*



*Adding creativity and realism to your service!*