

**WE'VE MADE
FIXED FULL-ARCH
RESTORATIONS
A SNAP.**

**NO SCREWS. NO CEMENT.
NO COMPROMISES.**

What if screws or cement were
no longer needed to attach a fixed
prosthesis to the abutments?

What if you could shorten and simplify
the treatment appointment?

What if the patient's esthetics and
comfort were maximized?

These questions were at the foundation of the design and development for the unique and innovative **LOCATOR F-Tx™ Fixed Attachment System** from Zest Dental Solutions. By leveraging our many years of expertise with the LOCATOR® Attachment System and our understanding of full-arch solutions for edentulous patients, we strived to create a simpler, more efficient system for **FIXED** full-arch implant restorations.

Fixed for the Patient. Easily Removed by the Clinician.

Welcome to LOCATOR F-Tx – No Screws. No Cement. No Compromises.

LOCATOR F-Tx™

A NEW WAY TO THINK ABOUT FIXED FULL-ARCH RESTORATIONS.

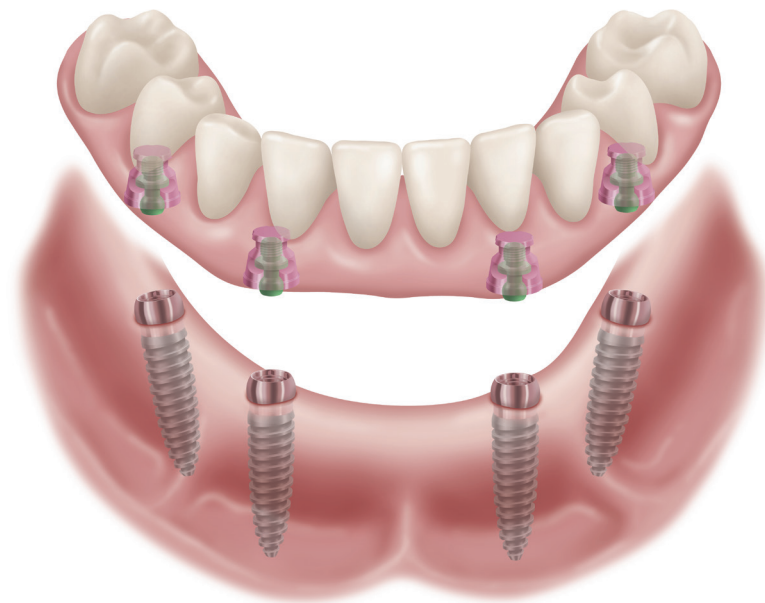
LOCATOR F-Tx IS A SIMPLIFIED, TIME SAVING SOLUTION for fixed full-arch restorations with no compromise to prosthesis strength or esthetics. Optimized for efficiency and chair time savings compared to conventional screw-retained systems, it features a novel, patent-pending “snap-in” attachment that eliminates the need for sub-gingival cement or screw access channels. An exceptional solution for immediate provisionalization, the fully integrated system accommodates the full range of final restorative options including all acrylic, metal-reinforced acrylic, PFM, and all zirconia frameworks. Truly unique and cutting-edge, LOCATOR F-Tx is sure to deliver satisfaction for both the patient and clinician.



**SCREW RETAINED PROSTHESIS
WITH SCREW ACCESS CHANNELS**



**LOCATOR F-Tx PROSTHESIS
MAINTAINS INTEGRITY AND ESTHETICS**



SIMPLICITY

Easy “snap-in” attachment and minimal components streamline procedures, while the unique design of the LOCATOR F-Tx Fixed Attachment System accommodates divergent/convergent scenarios up to 40 degrees between implants without the need for angled abutments.

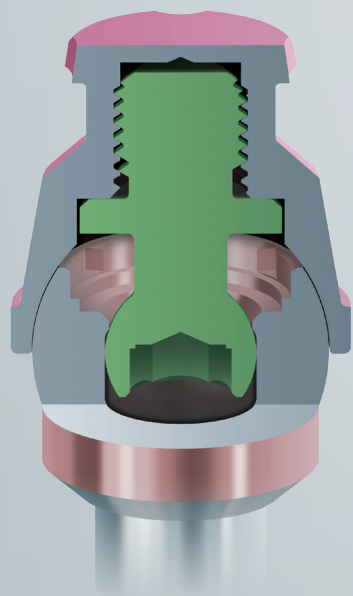
STRENGTH AND ESTHETICS

No cylinders, screw access channels, and screw heads to compromise esthetics or weaken the prosthesis. The ability of each Denture Attachment Housing to pivot on the Abutment up to 20 degrees in any direction allows the housing to be positioned into the ideal location for the prosthesis.

TIME SAVINGS

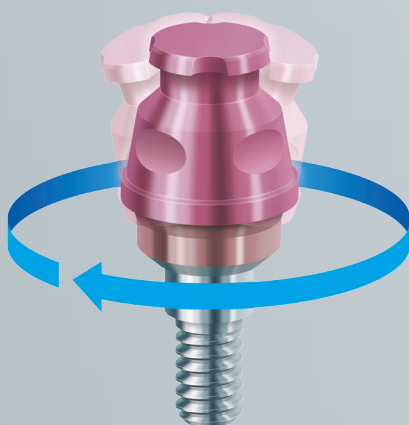
Significant chair time savings over conventional techniques for fabrication of an immediate provisional prosthesis. Patient visits are also expedited and simplified with quick, easy removal of the prosthesis during follow-up visits for final impressions and try-ins, as well as future recall and maintenance visits.

INTRODUCING LOCATOR F-TX™. THE FIRST FIXED FULL-



SECURE SNAP-FIT DESIGN

This revolutionary, patent-pending retention system works similar to a ball and socket, allowing the Denture Attachment Housing to securely snap into place and then pivot to the desired position. Once in place, it's fixed for the patient, and can easily be removed by the clinician during hygiene and maintenance visits.



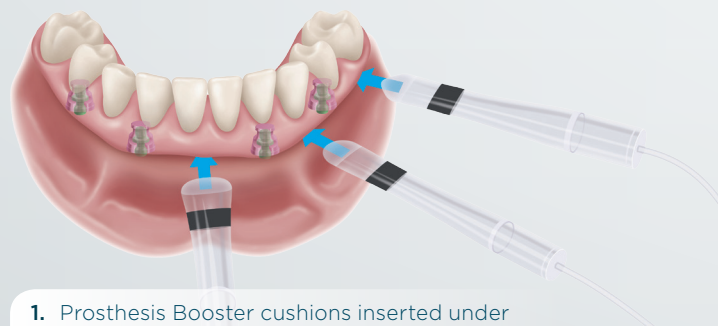
Denture Attachment Housing pivots 20 degrees in any direction allowing for the Housing to be positioned into the ideal location for the prosthesis.

SIMPLIFIED ANGLE CORRECTION/STRESS FREE PASSIVE FIT

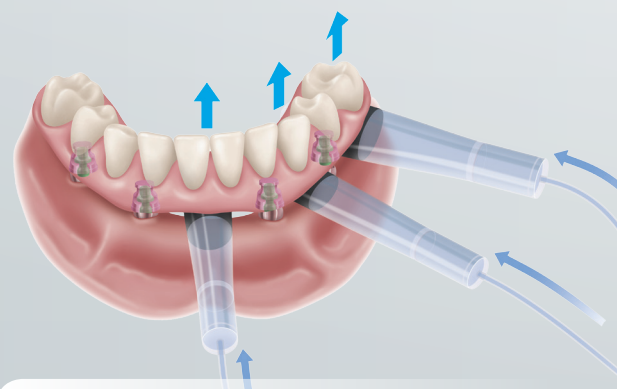
- The LOCATOR F-Tx Abutment features a unique, spherical coronal geometry which allows the Denture Attachment Housing to rotate in any direction and correct up to 40 degrees of convergence/divergence between two implants eliminating the need for angled abutments.
- Chair side processing procedures at final prosthesis delivery ensures a stress free passive fit.

REVOLUTIONARY PROSTHESIS REMOVAL SYSTEM

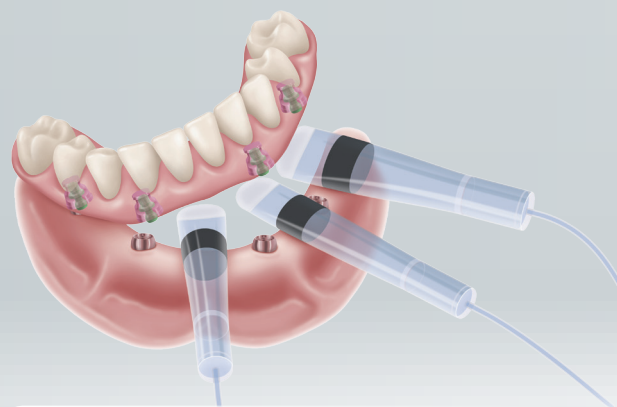
Removing the LOCATOR F-Tx prosthesis is quick and easy by using simple hydraulic displacement to disengage the prosthesis from the LOCATOR F-Tx Abutments.



1. Prosthesis Booster cushions inserted under the prosthesis between the prosthesis and soft tissue.



2. Prosthesis Booster cushions filled with water, and hydraulic displacement applied.



3. Prosthesis disengages from the LOCATOR F-Tx Abutments.

ARCH RESTORATION WITHOUT COMPROMISE.



DENTURE ATTACHMENT HOUSING

- Denture Attachment Housing is threaded internally to accept a PEEK Retention Ball that snaps into the LOCATOR F-Tx Abutment.
- Features an anodized pink finish for improved esthetics.
- Aggressive grooves and flats limit vertical and rotational movement.
- Denture Attachment Housing is passively picked-up in the prosthesis via a chair side technique.



RETENTION/PROCESSING BALLS

- PEEK Retention Balls are available in low, medium and high retention levels based on the needs of the case.
- A Processing Ball comes pre-inserted with the Denture Attachment Housing, and an additional Processing Ball is included, both are used for provisionalization and laboratory procedures.



LOW



MEDIUM



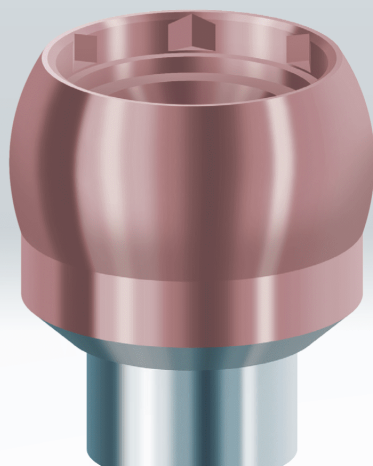
HIGH



PROCESSING

ABUTMENT

- Unique, spherical coronal geometry allows the Denture Attachment Housing to correct up to 40 degrees of convergence/divergence between two implants and pivot in any direction to position the Housings into the ideal location for the prosthesis.
- DuraTec™ Coating provides a hard, smooth and wear-resistant abutment exterior with an esthetically pleasing gingival tone.



ALL-IN-ONE PACKAGING

- LOCATOR F-Tx features all-in-one packaging that is sterile and includes everything you need. Abutment (with cap to deliver the abutment to the implant site), Denture Attachment Housing with pre-inserted Processing Ball, an extra Processing Ball, as well as one Blue (**Low**), Tan (**Medium**), and Green (**High**) Retention Ball.



DISCOVER LOCATOR F-Tx
VISIT US AT WWW.PREATDENTAL.COM



To learn more about the simplicity, time savings,
and unique “snap-in” attachment of the new
LOCATOR F-Tx™ Fixed Attachment System
please visit us at WWW.PREATDENTAL.COM



PREAT CORPORATION LLC
100 S 4TH STREET
GROVER BEACH, CA 93433
USA

TEL: 1-800-232-7732
FAX: 1-805-202-3076
EMAIL: ORDERS@PREATDENTAL.COM
WWW.PREATDENTAL.COM

DISTRIBUTED BY: