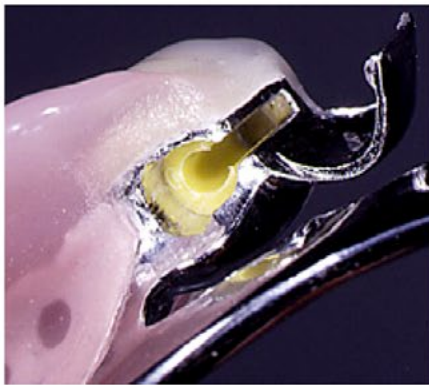
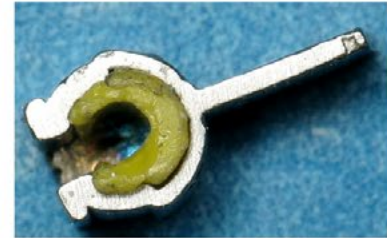




## Preci-Vertex Metal Hood Instructions



The Preci-Vertex Hood is a prefabricated metal receptacle to receive and hold the Preci-Vertex Female (a Hader Clip). The use of the Preci-Vertex Hood eliminates the difficulties of duplicating and casting the female receptacle in the cast frame work. The Preci-Vertex Hood may be connected to the cast frame with self curing resin, by casting the frame against the Hood, or by soldering or welding.

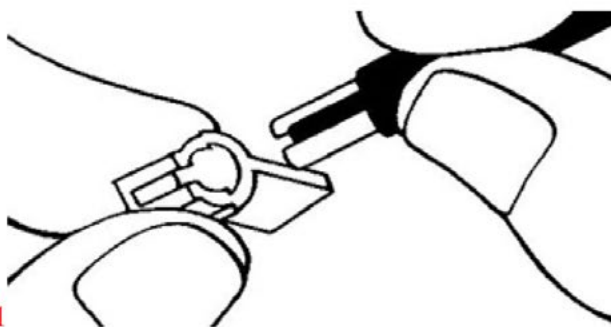
Improves accuracy, reduces labor and saves time with multiple techniques.

Space may be critical. The Preci-Vertex Hood is best utilized in the bicuspid areas. See the [Vertex Castable Hood](#) for limited space applications.

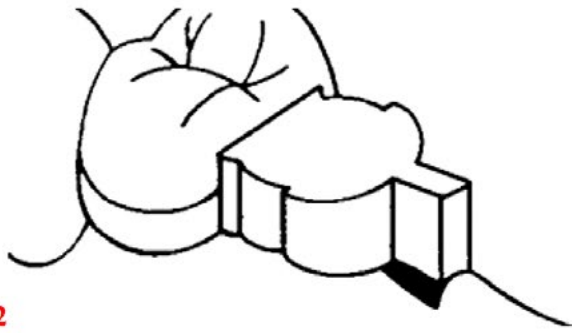
### Technique

The Preci-Vertex Male is cast with the retaining abutment patterns in the normal technique. Porcelain application is completed. To [view these steps, click here.](#)

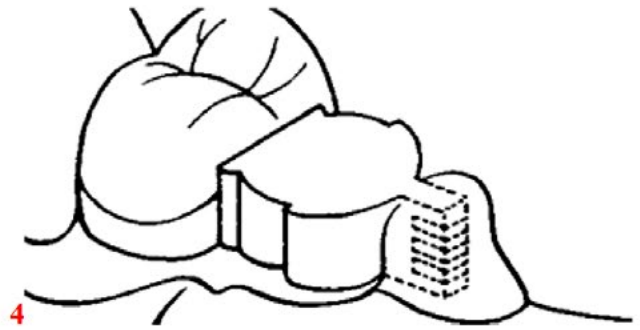
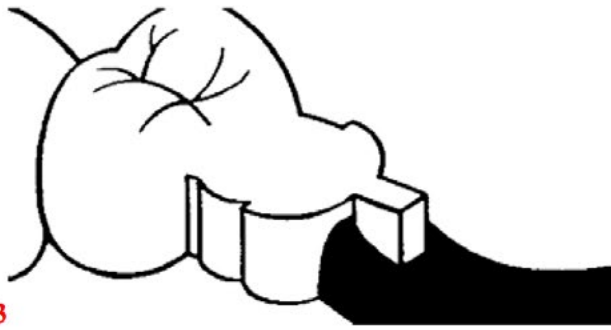
### Self Curing Resin Connection and Soldering Connection



1. Insert the plastic female into the Hood using the insertion tool (**FIG 1**). Make any necessary height reductions on the gingival of the hood.



2. Place Hood(s) over the male(s) on the master model. Block out all undercuts and prepare the cast for duplication for a refractory model (**FIG 2**).



3. Wax the frame up to the area of the Hood. Struts may be waxed on each side of the tail as the Hood (**FIG 3**). Complete and finish the casting.

4. Reassemble the Hoods and cast frame on the master cast. Cut retention grooves in the tail of the Hood with a thin disk. Connect the Hood to the cast frame with self curing resin or by soldering (**FIG 4**).