



Preci-Sagix Instructions

Patented Snap Mechanism for Consistent, Accurate, Reliable Results!



Indications

- The Preci-Sagix Attachment System is an extracoronaral attachment for resilient partial dentures as well as distal, lingual, or buccal placement on overdenture bar cases in the mandible or maxilla.

Contraindications

- Not appropriate where a totally rigid connection is required.

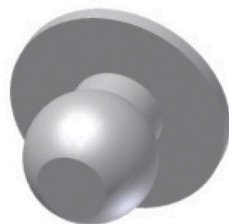
Benefits:

- Consistent accurate reliable results when using the prefabricated (machined) cast-to or threaded spheres. The accurate size and smooth machined finish limit wear and provide consistent retention and fit every case.
- 1.7mm and 2.2mm sizes for versatility
- The segmented female engages the neck of the sphere, as well as a larger surface area, for more retention and stability.
- The female flexes and provides a patient-pleasing audible click when the female is engaged.

recommended



cast-to noprax (for use with any dental alloy)
1.7 & 2.2mm



plastic castable pattern
1.7 & 2.2mm



threaded male and IR/NP
base ring
(2.2mm size only)

Technique



After a diagnostic wax-up and putty matrix have been fabricated, select the Preci-Sagix male that fits the case best, either the 1.7mm mini or the 2.2mm standard.

When space allows, choose the 2.2mm size

The prefabricated NOPRAX cast-to male is recommended over the plastic castable male due to the consistently accurate precision fit.

After waxing the abutments/bar to full contour, use the #1300P Preci-Sagix paralleling mandrel in a surveyor to set the male attachment. A box can be created in the waxup to accommodate the proximal plate of the male attachment.

The flat proximal plate on the Sagix male may be reduced if needed, but this proximal plate will help provide prosthesis stability.

The male should be placed as close as possible to the tissue to reduce abutment stress, increase interocclusal space, eliminate food traps, and allow for good esthetics and hygiene.



Cast-to

The undercut behind the metal proximal plate is fully incorporated into the wax-up



Castable

The burnout pattern is fully incorporated into the wax-up



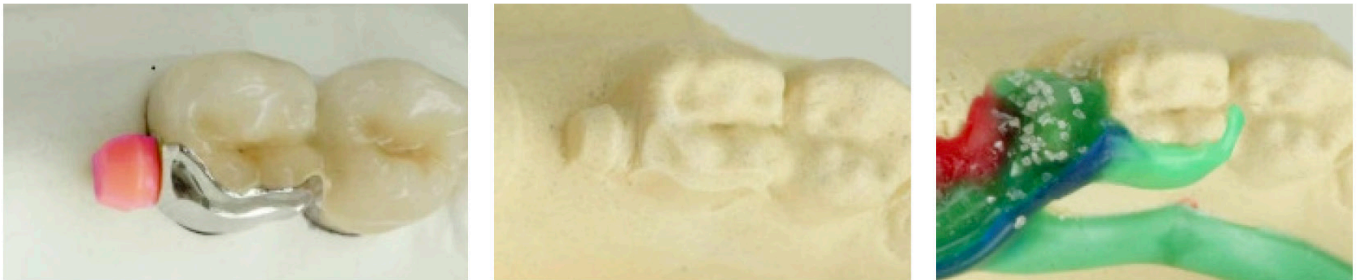
Threaded

The sphere is threaded into the base ring, then paralleled and set into the wax-up.



Do not sandblast to devest or use rubber wheels to polish the attachment. Glass beads, shells, or a PREAT fiberglass pencil work when devesting to maintain the accuracy of the male attachment. Lightly polish to a smooth finish. Apply ceramics as normal and send for try-in. A new pickup impression is taken, and the master cast with the crown and attachment in place is poured up.

Housing in Framework: Place the pink processing/duplicating female on the ball. Make sure the duplicating females are positioned parallel to each other and all undercuts are blocked out when duplicating and creating the refractory cast.

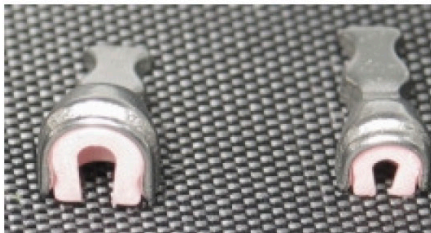


The framework is designed on the refractory cast. A 180 degree lingual arm with deep rest is recommended. Take special care when designing the attachment housing over the duplicated pink female. When finishing the framework, do not overpolish the inside of the female housing.



Using the prefabricated Metal Housing:

Make any desired modifications to housing tail, and use Sagix insertion tool #1323 to seat the pink processing female inside the housing.



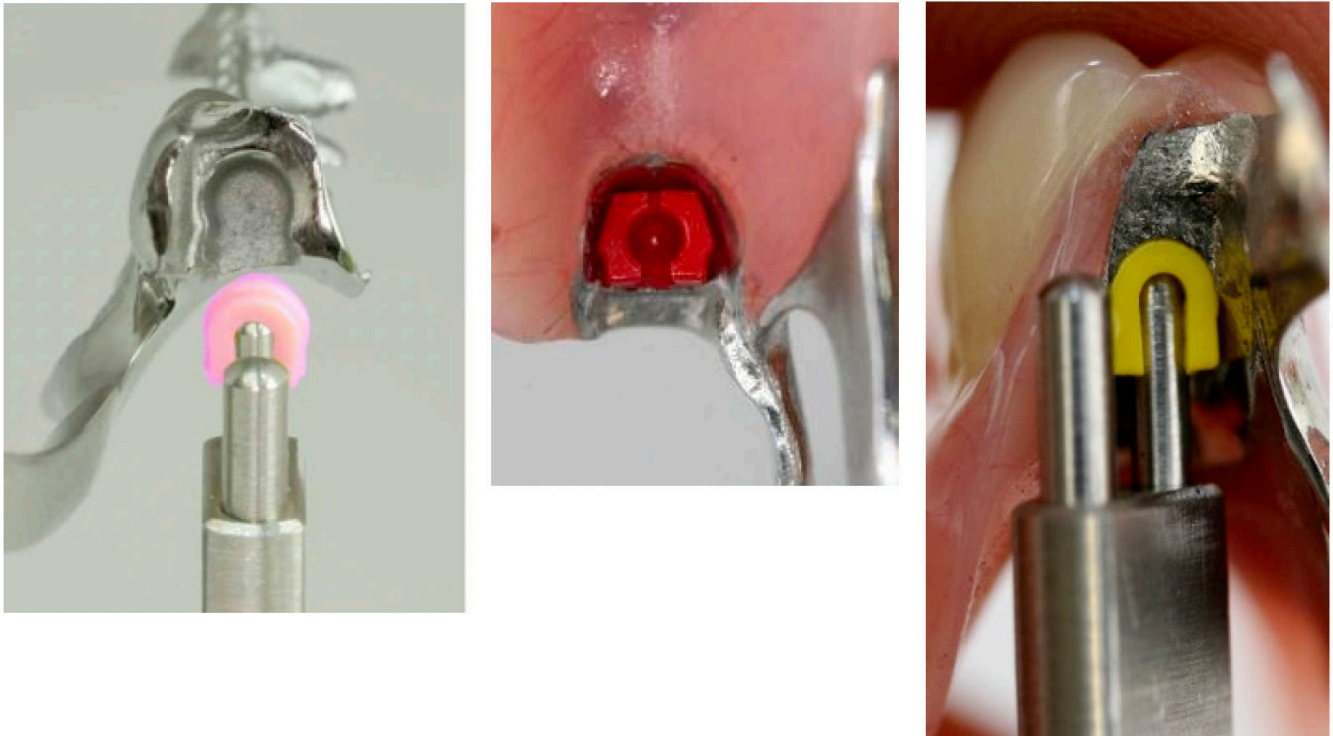
Block out all undercuts and duplicate.

Design framework so that a) the housing tail is connected to framework or b) the framework is designed to leave sufficient room for incorporation of the housing into acrylic resin.

The co/cr housing may be soldered, welded, or bonded to a co/cr framework.



After successful try in of the partial denture framework and tooth setup, process the partial denture with normal technique. An alternative technique with the prefabricated metal housing is to have this luted to the framework with self curing resin during try-in.



After processing, use the Sagix insertion tool to place the appropriate female insert--white (weak), yellow (standard), or red (strong) retention.

The Preci-Sagix is ideal as an extracoronal attachment on extracoronal partial dentures as well as distal, lingual, or buccal placement on overdenture bar cases.

Choose the Preci-Sagix male that fits the case best, either the 1.7mm mini or the 2.2mm standard.

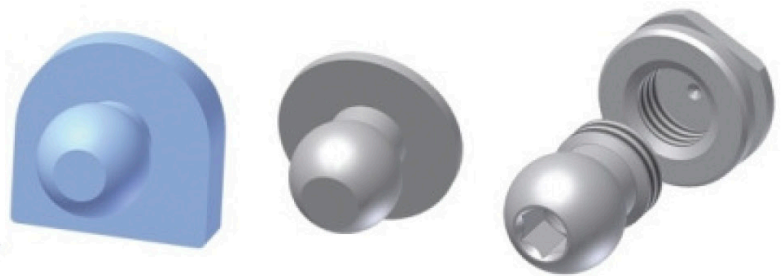
When space allows, choose the 2.2mm ball.

There are three choices of male:

- *plastic castable pattern (any hard alloy can be used)

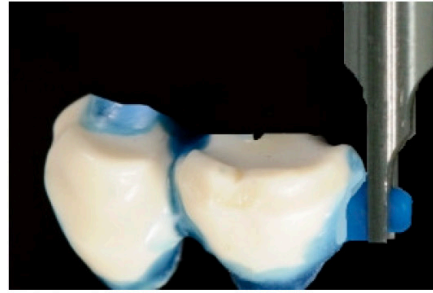
- *cast-to-noprax (only for non-precious alloy)

- *threaded male and base ring (2.2mm size only)



After waxing the abutments/bar to full contour, use the #1300P Preci-Sagix paralleling mandrel in a surveyor to set the be created in the waxup to accommodate the proximal plate of the male attachment.

The flat proximal plate on the Sagix male may be reduced if needed, but this proximal plate will help provide prosthesis stability. The male should be placed as close as possible to the tissue to reduce abutment stress, increase interocclusal space, eliminate food traps, and allow for good esthetics and hygiene.



Do not sandblast to devest or use rubber wheels to polish the attachment. Glass beads, shells, or a PREAT fiberglass pencil work when devesting to maintain the accuracy of the male attachment. Lightly polish to a smooth finish.