



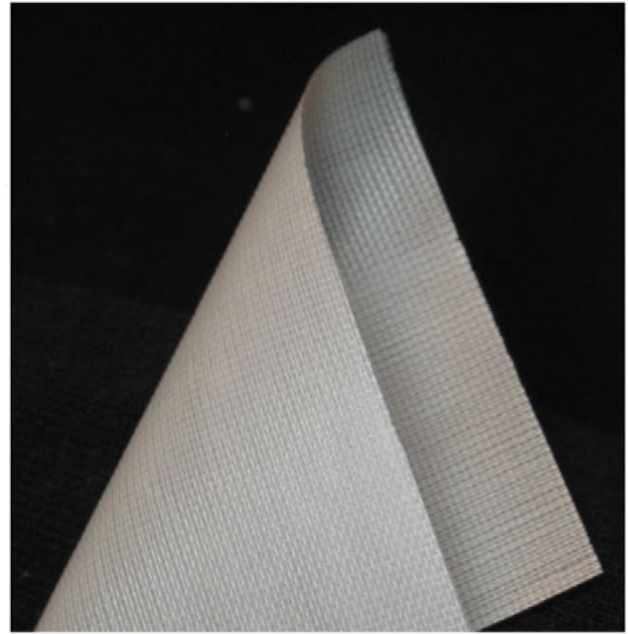
Perma Mesh Denture Repair

When repairing or reinforcing mandibular or maxillary dentures, the unidirectional eFiber is used at the junction of teeth and acrylic at the incisal notch, between the central anterior teeth.

Perma Mesh is ideal to use on the labial frenal notch (where a crack is already beginning) as well as both the anterior and posterior palate.

Because Perma Mesh is translucent and easy to polish, it may be used in any thin areas.

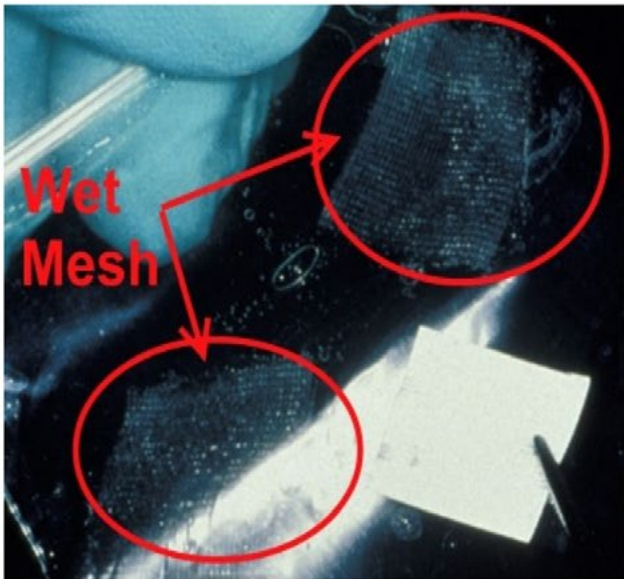
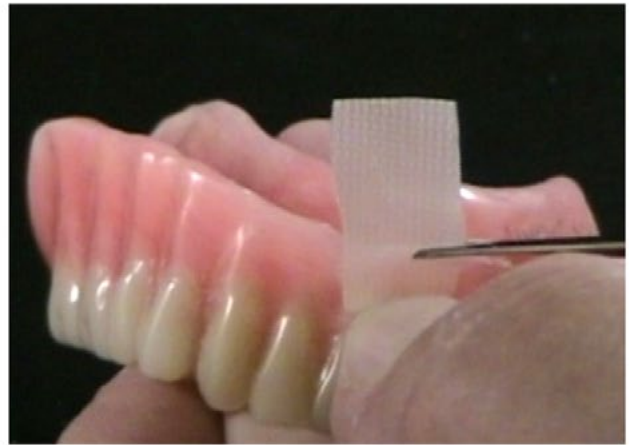
This segment covers repairing the frenal notch, but this technique may be used for repairing any acrylic or composite prosthesis (*night guard, splint, temporary, partial, etc*) that requires strength as well as maximum esthetics.



A thin layer (0.3mm is sufficient) of acrylic is removed from the buccal flange. This keeps the flange thin, as well as providing a "finish line" for the mesh.

In fiber reinforcement, our goal is to stop the fracture before it begins. Burying the "reinforcement" does not achieve this goal.

Measure and cut two small pieces of Mesh. Squares or rectangular pieces are ideal as this allows the Mesh to be placed in as many planes as possible.



Every piece of Perma Mesh has been impregnated with PMMA via a silane coupler. Unique to Perma Mesh and eFiber is that these materials form a chemical, as well as mechanical bond, with resins.

In order to activate the PMMA in Perma Mesh, make a "slurry" mix of self cure acrylic--mostly monomer, but still some polymer.

Pour this slurry mix on the Mesh. This activates the Polymer inside the Mesh.

The Polymer is activated and the Mesh is ready to use when the Mesh turns translucent.

Paint a thin layer of monomer on the relieved flange, and place the "wet" mesh on the flange. The Mesh is translucent and will "disappear" upon placement.

Add polymer (the salt and pepper technique is simple) or acrylic resin on top of the mesh. Cure in the method of choice.

Do not worry if the Perma Mesh extends beyond the borders--it is very easy to grind and polish the glass fibers once cured.





Polish and finish the reinforced denture.

The F8 silicone cutter polishers are ideal for minor reductions and pre-polishing.

The Goats Hair brushes with 244 blue polish provide a wonderful, single step high luster final polish.