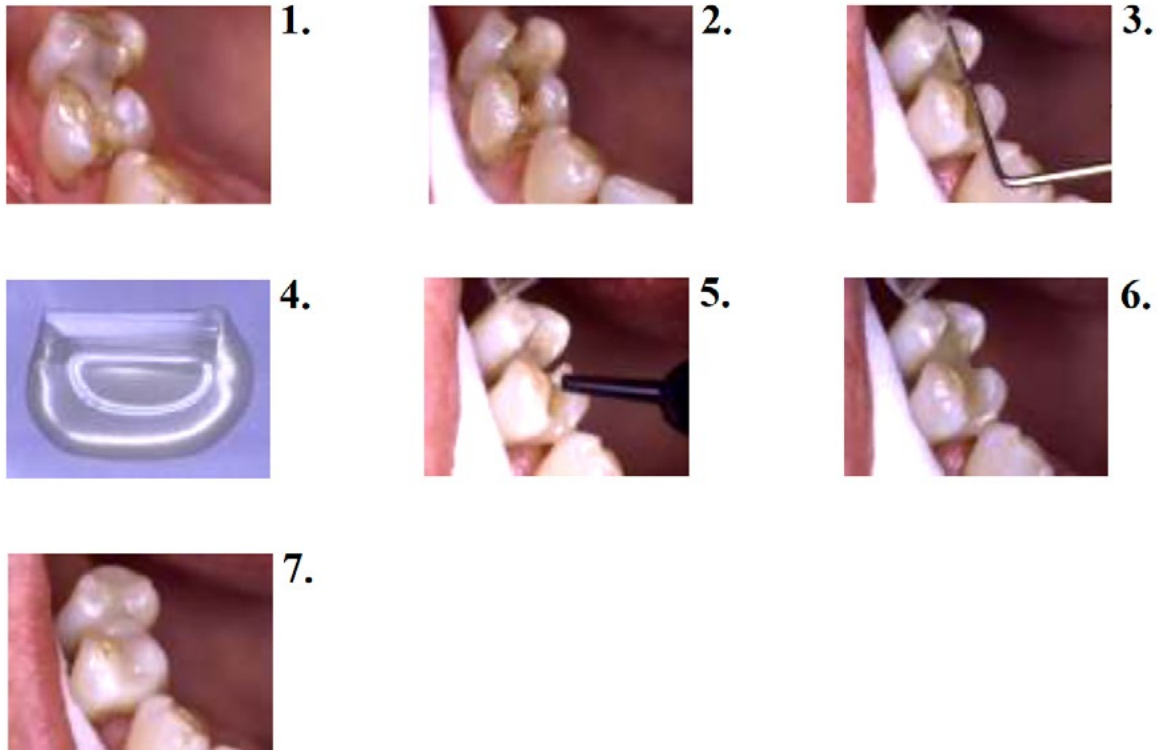




## Splints: Occlusal Periodontal Splint



### Occlusal periodontal splint

#### Step-by-step:

1. Initial situation: The existing splint was made of two old composite fillings – the proximal space was filled with composite. The splint had fractured many times.
2. Only a little (a groove) preparation was needed, after removing the old splint and old composite fillings from teeth.
3. The right length of **Perma Fiber** for the splint was measured with a pocket depth gauge. The fibers should be 1- 2 mm shorter than the groove.
4. The fibers were wetted within a plastic foil and with a light curing resin; 1 drop of resin per 1 cm of fiber. The fibers were bent to improve and accelerate the wetting process. The fibers are ready to use when they turn **translucent**.
5. A thin layer of flow composite was added to the bottom of the cavities, but it was not light cured yet. Prevent the proximal spaces being covered with composite.
6. The fiber bundle was pressed into the right position in the bottom of the cavities. Make a good contact between the bottom of the cavities and the fibers. The splint was cured tooth-by-tooth, by a quick exposure to light.
7. After the insertion of the splinting material itself, the cavities were filled using restorative composite and cured for 40 seconds. The occlusion was checked before finishing and polishing the splint.